



123rd *Semi-Annual Sale*

**CENTRAL MISSOURI
POLLED HEREFORD
BREEDERS ASSOCIATION**

April 13, 2024 • NOON

Interstate Regional Stockyards • Cuba, MO

This sale will be broadcast live on the internet.

DVAuction

Broadcasting Real-Time Auctions

Real time bidding & proxy bidding available.



- OFFERING OVER 60 LOTS -

COW-CALF PAIRS | OPEN AND BRED HEIFERS | BRED COWS | HERD BULL PROSPECTS | COMMERCIAL HEREFORDS



123rd *Semi-Annual Sale*

**CENTRAL MISSOURI
POLLED HEREFORD
BREEDERS ASSOCIATION**

April 13, 2024 • NOON

Interstate Regional Stockyards

I-44 and Exit 208 | Address: 737 Hwy DD, Cuba, MO 65453

60+ Lots

CENTRAL MISSOURI'S BEST SELL AT AUCTION
Semen Tested Bulls
Cow/Calf Pairs and Splits
Bred and Open Heifers
Hereford Influenced Commercial Females

AUCTIONEER:

Jordan Hunter 417-224-6296

SPECIAL REPRESENTATIVES

Kyle Lynn.....Ringman 816-681-3614
Jim Reed.....Ringman 417-860-3102
Don Birk.....Ringman 417-860-8595

SALE BARN - SALE DAY TELEPHONE

573-885-7431 or Larry Day 660-621-0812

**CENTRAL MISSOURI POLLED HEREFORD
BREEDERS ASSOCIATION BOARD**

President

Tony Kaczmarek • Rolla, MO • 573-202-4132

Vice-President

Tim Cavanaugh • Sullivan, MO • 573-259-7992

Larry Day • Sec/Treasurer/ Sale Manager

12139 Highway 135, Pilot Grove, MO 65276

660-834-4678 • cmphba@gmail.com

Directors at Large

Mike Choate, Pleasant Hope, MO • 417-267-2652

Jarrold Grayson, Newburg, MO • 417-597-2524

TERMS:

The terms of the sale are cash, check or bank draft debit/credit card unless other arrangements are made in advance with the owner. **Electronic payments now accepted.** Settlements are to be made with the clerk of the sale immediately at the conclusion of the auction. All stock will be at buyer's risk as soon as bidding ends, but the management will attend to loading on trucks in compliance with instructions from the purchasers.

GUARANTEE:

All cattle will sell under the suggested sale terms and conditions of the American Hereford Association.

HEALTH:

Individual health papers will be furnished with each lot sold. A number have been OCV'd. All bulls are semen tested. State regulations require all non-virgin bulls and all bulls over 24 months of age be tested for Trichonomiasis.

BIDS: The auctioneer-in-charge will have final say in regard to all final bids.

MAIL OR WIRE BIDS:

We hope each and everyone interested can attend the sale in person, but those who cannot may mail phone bids to the auctioneer or any of the representatives.

AI CERTIFICATES:

Any female that is bred to an AI sire not owned by the seller will NOT have an AI certificate furnished.

SALE ORDER:

The sale order will be as follows: Cow/Calf Pairs, Open Heifers, Bulls, Bred Heifers, Bred Cows, followed by Commercial Females.

CATALOG ERRORS:

Statements from the auction block take precedence over printed material. The most current EPDs from AHA issued registrations were used when available. EPDs are subject to change weekly based on data submitted to the AHA. The most current EPDs are available from the AHA's website at www.hereford.org.

TRUCKING:

Trucking available - contact:

Larry Day 660-621-0812

Lonnie Peterson 573-489-4696

Joe Peart 660-651-8193

A Word from the Sale Manager

Welcome to the 123rd Semi-Annual sale of the Central Missouri Polled Hereford Breeders Association.

Well, here we are again, spring just around the corner or is it? 83 degrees one afternoon, 21 degrees the next morning. Baby calves are showing up in fields up and down the roads, maybe not as many as in the recent past. With two years of dry summers, low stockpiles of forages and the outstanding markets that are upon us, lots of females have been removed from production.



With the recent reports of cow numbers or lack thereof, we as producers should experience profitable times for a couple years, or maybe longer. If your operation experienced any of these situations and you need to restock or rebuild with some fresh genetics, make plans to be with us Saturday, April 13.

An outstanding offering of breeding age heifers from some of the breeds leading sires as well as a group of spring pairs that will be second to none will be offered for your approval. Proven bulls from 12 months up to 30 months will be available for your inspection suitable for any progressive purebred breeder or to produce those ever so sought out baldy and cream colored feeder calves.

Bring this catalog, grab a friend, come spend a few hours with us. Visit with producers, grab a sale barn burger, maybe find just what you've been needing or looking for! Again, we will also be available online with DV Auction, and can help arrange trucking needs.

Hope to see you Saturday the 13th in Cuba, MO. Sale starts at Noon!

Thanks, *Larry Day*



In Memory of Bill Maerli

March 20, 1949 – February 15, 2024

Bill first worked a sale for CMPHBA Sept. 7, 1985. He worked 76 sales as a ringman and long-time member.

RIP Bill, we will all miss you!

DVAuction

www.dvauction.com

Watch & Bid online for FREE!

Can't make the sale?

Let DVAuction bring the sale to you!

Busy during the sale?

Let DVAuction represent your bid!

Visit www.dvauction.com and Register!

It's as easy as 1, 2, 3...

1. Create an account at www.dvauction.com under the "create new account" tab
2. Apply for bidding by clicking "apply for bidding" in the upper left corner of your screen, at least 24 hours prior to the auction
3. Tune into the sale and make your purchases!

For General Questions Please Contact Our Office:
(402) 316-5460 or support@dvauction.com


*High Speed Internet Access Required



Lot 1A - Semen

Donation Lot

1A WMC D87 2C MOONSHINE 507K ET (DLF,HYF,IEF,MSUDF,MDF,DBF)

Bull | P44458531 | 10/07/2022 | WMC507K 

Consigned by: **JETT & WATSON McCONNAUGHY, WMC CATTLE**


UPS SENSATION 2296 ET	CHURCHILL SENSATION 028X
KLD RW MARKSMAN D87 ET	UPS JT MISS NEON 7811 1ET
RW MINDY 3078 6096	RW KW HUMMER K23 3078
	RW DEDE 23C 9145

GV CMR X161 TIMES UP A152	RST TIMES A WASTIN 0124
WMC A152 9328 DAISEYMAE 2C ET	GRANDVIEW CMR MS 4003 X161
GRANDVIEW CMR MS MATERIAL 9328	CMR GVP MR MATERNAL 156T
	CMR GRANDVIEW MISS 1236 60S

CED 0.8	BW 4.3	WW 47	YW 81	DMI 0.1	SC 0.2	SCF 14.4
MM 27	MCE -0.1	MG 51	MCW 79	UDDR 1.2	TEAT 1.2	CW 61
FAT 0.002	REA 0.53	MARB -.05	BMI\$ 310	BI\$ 361	CHBS 95	

Stylish and easy on the eyes, Moonshine comes from the exceptional 2C donor cow. He is extremely well structured, big-footed and big-boned. We truly believe that he can make the kind that do it all - stand out in the show ring and be foundation type females. In 2023, he was the Grand Champion Bull at the Ozark Empire Fair and Missouri State Fair Junior Bull Show. He was also selected as Division Champion at NAILLE in Louisville, KY and Reserve Division Champion at Cattleman's Congress in OKC. *10 Straws Semen.*

1B WMC 66589 TROJAN BOSS 194H (DLF,HYF,IEF,MSUDF)

Bull | P44178749 | 09/03/2020 | WMC194H 

Consigned by: **WMC CATTLE COMPANY, N&N CATTLE COMPANY**

R LEADER 6964	HYALITE ON TARGET 936
/S MANDATE 66589 ET	R MISS REVOLUTION 1009
/S LADY DOMINO 0158X	SHF RIB EYE M326 R117
	/S LADY DOMINO 652S

NJW 78P 88X COWBOSS 199B ET	NJW 98S R117 RIBEYE 88X ET
WMC 199B COWMAKER 86E	NJW BW LADYSPORT DEW 78P ET
WMC Y509 TROJAN VISION 74A	GRNDVIEW CMR156T VISIONY509 ET
	WMC LADY PEARL 16X

CED 7.3	BW 1.9	WW 60	YW 96	DMI 0.4	SC 1.3	SCF 22.3
MM 35	MCE 3.1	MG 65	MCW 87	UDDR 1.3	TEAT 1.4	CW 65
FAT 0.082	REA 0.21	MARB 0.25	BMI\$ 430	BI\$ 523	CHBS 113	

Wide-based, thick-made and dark pigmented Mandate son. Prolific cow family behind this WMC/ N&N herd sire. He passes a tremendous amount of volume and density into his calves. In the WMC sale this past fall, his daughters were easily the best sellers. Used heavily at WMC in 2023! *10 Straws Semen.*



Lot 1B - Semen

Thank You
WMC Cattle Company
and N&N Cattle Company
for your generous contribution!

2 **BADE SDS M288 MATTY 2209** {HYP}

Bull | P44328338 | 02/15/2022 | 2209

Consigned by: *BADE POLLED HEREFORDS*

ALLLENDALE ANZAC E114
WIRRUNA MATTY M288
WIRRUNA CIRCLE H13

ALLENDALE YACKA
ALLENDALE DAWN B22
ELITE 4110 E212
WIRRUNA CIRCLE F31

LJR MSU GF COLD FUSION 52Z ET
LJR MSU MAGGIE 101D
LJR RENATA 147T

SB 54E 75R FUSION 138X ET
EF MAGGIE P606 R9
MC RANGER 9615
LJR PAULA 285K

CED 2.4	BW 3.2	WW 56	YW 95	DMI 0.5	SC 0.4	SCF 21.8
MM 21	MCE 0.8	MG 49	MCW 105	UDDR 1.3	TEAT 1.3	CW 71
FAT -0.008	REA 0.4	MARB 0.11	BMIS 428	BIS 505	CHB\$ 116	

Matty is a good two-year-old virgin bull. He is out of an LJR cow and a Australian bred bull. Matty should increase marbling.



Lot 2

3 **BADE 265D MISTY 2132** {MDP}

Cow | P44304956 | 10/17/2021 | 2132

Consigned by: *BADE POLLED HEREFORDS*

R LEADER 6964
CMF 12Z DECKER 265D
CMF 695N ROSE 12Z

HYALITE ON TARGET 936
R MISS REVOLUTION 1009
DRF JWR PRINCE VICTOR 711
CMF 314E ROSE 695N

NJW 73S W18 HOME RANCH 45Z ET
BADE 45Z MISTY 1737
BADE 935T MISTY 1104

SHF WONDER M326 W18 ET
NJW P606 72N DAYDREAM 73S
CMF 695N TYSON 935T
KBJ 6002 MISTY 903

CED 5.7	BW 2.3	WW 59	YW 93	DMI 0.5	SC 1.2	SCF 19.3
MM 29	MCE 4.4	MG 58	MCW 80	UDDR 1	TEAT 1.1	CW 74
FAT 0.022	REA 0.37	MARB 0.04	BMIS 386	BIS 459	CHB\$ 108	

2132 was pasture exposed to LJR MSU 6153 HARRY 128H from 4.20.23 to 2.1.24. Should have a calf by sale.



Lot 3

4 **BADE KBJ 68A VICTORIA 2113** {MDP}

Cow | P44290853 | 08/05/2021 | 2113

Consigned by: *BADE POLLED HEREFORDS*

CS CMF P606 MOJO U408
CMF 128W ATTABOY 68A
CMF 906T RENE 128W

PW VICTOR BOOMER P606
CS VICKY 711 N270
TRM 37E 121 KING 3238
CMF 538K RENE 906T

NJW 73S W18 HOME RANCH 45Z ET
BADE KBJ 45Z VICTORIA 1525
BADE KBJ 935T VICTORIA 1223

SHF WONDER M326 W18 ET
NJW P606 72N DAYDREAM 73S
CMF 695N TYSON 935T
JJD VICTORIA 23T ET

CED 3	BW 1.8	WW 54	YW 80	DMI 0.3	SC 1	SCF 19.5
MM 35	MCE 4.1	MG 62	MCW 74	UDDR 1	TEAT 0.9	CW 76
FAT 0.012	REA 0.45	MARB 0.06	BMIS 397	BIS 466	CHB\$ 114	

2113 was pasture exposed to LJR MSU 6153 HARRY 128H from 9.22.23 to 3.1.24
Lot 4A: Heifer calf, born 9.22.23, Bade KBJ 247J VICTORIA 2327 (44521470).

CATALOG MATERIAL

All announcements at the sale by the owners or the auctioneer concerning the cattle will take precedence over statements in the sale catalog.

Larry Day, as sale manager, acts only as an agent for the sellers and has no responsibilities other than those involved in conducting the sale.

5 **BADE 45Z MISTY 1927** {MDP}

Cow | P44096500 | 12/09/2019 | 1927

Consigned by: *BADE POLLED HEREFORDS*

SHF WONDER M326 W18 ET
NJW 73S W18 HOME RANCH 45Z ET
NJW P606 72N DAYDREAM 73S

KCF BENNETT 3008 M326
SHF GOVERNESS 236G L37
PW VICTOR BOOMER P606
NJW 94J DEW 72N

CMF 695N TYSON 935T
BADE 935T MISTY 1104
KBJ 6002 MISTY 903

TRM 37E 121 KING 3238
CMF 314E ROSE 695N
BOYD BEEF 6002 ET
TRM NTJ31 DONNA BATTLE 2299

CED 5.2	BW 2.1	WW 53	YW 88	DMI 0.4	SC 1	SCF 17.8
MM 32	MCE 4.5	MG 59	MCW 80	UDDR 1.1	TEAT 1.1	CW 76
FAT 0.002	REA 0.41	MARB 0.04	BMIS 371	BIS 437	CHB\$ 116	

1927 was pasture exposed to LJR MSU 6153 HARRY 128H from 3.1.23 to 2.1.24. Should calve by sale.



Lot 5



Lot 6

6 DFF 1512 FELICIA 822 {HYP,DBP}

Cow | P43896025 | 02/25/2018 | DFF822

Consigned by: *BADE POLLED HEREFORDS*

RH GLENGROVE 719T MITT Z27 TH 122 711 VICTOR 719T
RH DAYTON 1512 GLENGROVE WEDNESDAY W32
 LJR LORIE 348T PW VICTOR BOOMER P606
 LJR WESLYNN 253N
 LCC 7067 SOUTHERN PRIDE 112 JJD LCC LIMIT UP 7067
DFF 112 SADIE 322 LCC 043 SOUTHERN LADY 705
 DFF 25T PAIGE 934 KPY R524 DEVIL 25T
 KPY M33 MISS MIKO 8T

CED 1.1	BW 2.3	WW 45	YW 67	DMI -0.2	SC 0.9	SCF 11.6
MM 24	MCE 0.1	MG 46	MCW 73	UDDR 1.3	TEAT 1.2	CW 55
FAT 0.002	REA 0.27	MARB 0.09	BMI\$ 270	BIIS 327	CHBS 100	

822 was pasture exposed to CMF 24Z HAMPTON 653H from 3.1.23 to 10.1.23. Should calve by sale.



Lot 7

7 BADE 45Z MISTY 1737 {MDP}

Cow | P43870391 | 12/31/2017 | 1737

Consigned by: *BADE POLLED HEREFORDS*

SHF WONDER M326 W18 ET KCF BENNETT 3008 M326
NJW 73S W18 HOME RANCH 45Z ET SHF GOVERNESS 236G L37
 NJW P606 72N DAYDREAM 73S PW VICTOR BOOMER P606
 NJW 94J DEW 72N
 CMF 695N TYSON 935T TRM 37E 121 KING 3238
BADE 935T MISTY 1104 CMF 314E ROSE 695N
 KBJ 6002 MISTY 903 BOYD BEEF 6002 ET
 TRM NTJ31 DONNA BATTLE 2299

CED 6.9	BW 1.5	WW 50	YW 83	DMI 0.3	SC 1	SCF 18.2
MM 31	MCE 5.4	MG 56	MCW 80	UDDR 1.1	TEAT 1.1	CW 75
FAT 0.002	REA 0.39	MARB 0.05	BMI\$ 377	BIIS 441	CHBS 116	

1737 was pasture exposed to CMF 24Z HAMPTON 653H from 11.24.23 to 3.1.24. **Lot 7A:** Bull calf born 9.22.23, BADE 653H HAMPTON 2324 (44521469).



Lot 8

8 BADE KMS 68A ROSE 1726 {HYP,MDP}

Cow | P43870378 | 09/17/2017 | 1726

Consigned by: *BADE POLLED HEREFORDS*

CS CMF P606 MOJO U408 PW VICTOR BOOMER P606
CMF 128W ATTABOY 68A CS VICKY 711 N270
 CMF 906T RENE 128W TRM 37E 121 KING 3238
 CMF 538K RENE 906T
 NJW 73S W18 HOME RANCH 45Z ET SHF WONDER M326 W18 ET
BADE KMS 45Z ROSE 1517 NJW P606 72N DAYDREAM 73S
 BADE KMB 6002 ROSE 1214 BOYD BEEF 6002 ET
 SF ROSE 925 378

CED 1.2	BW 2.5	WW 57	YW 84	DMI 0.4	SC 0.9	SCF 19.1
MM 32	MCE 2.2	MG 61	MCW 78	UDDR 0.9	TEAT 0.9	CW 74
FAT 0.012	REA 0.41	MARB 0.05	BMI\$ 387	BIIS 458	CHBS 108	

1726 WAS PASTURE EXPOSED TO CMF 24Z HAMPTON 653H from 11.24.23-3.1.24. **Lot 8A:** Heifer calf born 10.7.23, BADE KMS 653H ROSE 2331 (44521476).

9 BF TONYA 9304L {HYP}

Cow | P44486723 | 05/02/2023 | 9304L

Consigned by: *BESHER FARMS*

C&L CT FEDERAL 485T 6Y KJ HVH 33N REDEEM 485T ET
LJR MSU 6Y HUNTER 56H C&L MISS JUNIOR 408 1T
 LJR MSU MAXY 56F LJR MSU 28M MAX 124Z
 LJR MSU RACHEL 36C
 HUTH FTF TORQUE C002 SHF YORK 19H Y02
FTF TONYA 9304G HUTH T013 DOMINETTE Z016
 JJH CLASY SHANA 8348U FTF CLASS ACT 618S
 OVF SHANA ROSE

CED 5	BW 2.7	WW 61	YW 94	DMI 0.3	SC 1.1	SCF 15.1
MM 19	MCE 0	MG 49	MCW 91	UDDR 1.4	TEAT 1.4	CW 68
FAT 0.032	REA 0.27	MARB -.04	BMI\$ 316	BIIS 384	CHBS 95	

Above breed average in 8 traits. Heifer is bunk broke and excellent docility will come to a 5 gallon bucket. This gal has not been pushed with feed. She has been on stockpiled fescue all winter with some grain. Has been given Nasalgen3, SafeGaurd wormer, and Blackleg 11-14-23 and boosted 12-2-23. Guaranteed open.

DVAuction
 Broadcasting Real-Time Auctions

Visit www.DVAuction.com
 and Register Today!

For General Questions Please Contact Our Office:
 (402) 316-5460 or support@dvauction.com



FARM IMPLEMENT & CATTLE FEEDING EQUIPMENT

P.O. Box 1674 • Harrison, AR 72602-1674

(870) 437-2944 • FAX (870) 437-2212

"Where Price and Quality Meet"

“Great prices for better quality and higher gauge equipment than you can get anywhere else.”

-Bill Treece, CMPHBA Member



Visit www.bjmanufacturing.com to find equipment available,
and a retailer near you!

10 BF KEYANNA 44L (HYP,DBP)

Cow | P44486720 | 04/15/2023 | 44L

Consigned by: BESHER FARMS

C&L CT FEDERAL 485T 6Y
LJR MSU 6Y HUNTER 56H
LJR MSU MAXY 56FKJ HVH 33N REDEEM 485T ET
C&L MISS JUNIOR 408 1T
LJR MSU 28M MAX 124Z
LJR MSU RACHEL 36CLPH 4R RANK N FILE 83D
BESHER'S KEYANNA 44 RNF
OAKCREST KEYANNA 218 468XMSU TCF REVOLUTION 4R
LPH LORETTA 46Z
RHF VICTOR 424 218
OAKCREST KEYANNA P606 353U

CED 5.8 BW 1.9 WW 59 YW 88 DMI 0.3 SC 1 SCF 12.6

MM 20 MCE 0.1 MG 49 MCW 76 UDDR 1.3 TEAT 1.3 CW 64

FAT 0.032 REA 0.37 MARB 0.06 BMI\$ 282 BI\$ 352 CHB\$ 99

Her mom is still in the herd for her ability to produce some great females and has been a producer year after year. Great female factory. Heifer is bunk broke, excellent docility and will come to a 5 gallon bucket. Has not been pushed with feed, she has been on stockpile fescue all winter with some grain. Has been given Nasalgen3, SafeGaurd wormer, and Blackleg 11-14-23 and boosted 12-2-23. Guaranteed open.



Lot 10

11 BRP DIANNE 342 (DBP)

Cow | P44453440 | 03/18/2023 | 342

Consigned by: BESHER FARMS

EFBEEF BR VALIDATED B413
SLAYTON 122 JUBILEE OF 544
SLAYTON 544 BOOME OF 741 4EFBEEF TFL U208 TESTED X651 ET
EFBEEF 4R THYPA Y8 5
MSU TCF REVOLUTION 4R
MGM 50 DM ON TIME 741S CORNWALL Y02 24E
BRP DIANNE 017
BRP DIANNE 564SHFYORK 19H Y02
S JANE 936 55C
KCF BENNETT 9126J S100
BRP DIANNE X4

CED 3.2 BW 2.4 WW 65 YW 100 DMI 0.3 SC 1.2 SCF 15.2

MM 29 MCE 2.4 MG 61 MCW 86 UDDR 1.4 TEAT 1.4 CW 76

FAT 0.042 REA 0.64 MARB 0.4 BMI\$ 363 BI\$ 462 CHB\$ 152

Bunk broke and excellent docility, will come to a 5 gallon bucket. Has not been pushed with feed, been on stockpile fescue all winter with some grain. Given Nasalgen3, SafeGaurd wormer, and Blackleg 11-14-23 and boosted 12-2-23. Guaranteed open.

12 BRP PRINCESS 334 (DBP)

Cow | P44453443 | 03/06/2023 | 334

Consigned by: BESHER FARMS

KCF BENNETT REVOLUTION X51
RV 9021W OUTLIER 4921
K&B LADY SENTRY 9021WMSU TCF REVOLUTION 4R
KCF MISS PROFICIENT U201
UPS DOMINO 3027
K&B KNOCKOUT LADY 7146TBRP RED BULL 200Z 60
BRP PRINCESS 020
BRP PRINCESS 127CHURCHILL RED BULL 200Z
BRP JACKIE 439
BRP BENN R73 801
BRP STELLA 903

CED 5.3 BW 2.5 WW 67 YW 110 DMI 0.6 SC 1.1 SCF 23.2

MM 33 MCE 6 MG 67 MCW 88 UDDR 1.3 TEAT 1.3 CW 83

FAT 0.052 REA 0.79 MARB 0.44 BMI\$ 486 BI\$ 595 CHB\$ 162

Bunk broke and excellent docility, will come to a 5 gallon bucket. Has not been pushed with feed, been on stockpile fescue all winter with some grain. Given Nasalgen3, SafeGaurd wormer, and Blackleg 11-14-23 and boosted 12-2-23. Guaranteed open.

13 BRP DOMINET 327 (DBP)

Cow | P44453533 | 03/03/2023 | 327

Consigned by: BESHER FARMS

SCHU-LAR ON TARGET 22S
KCF BENNETT ENCORE Z311 ET
KCF MISS REVOLUTION X338 ETSCHU-LAR 5N OF 9L 3008
SCHU-LAR 208 OF 1H 121 ET
MSU TCF REVOLUTION 4R
JW 718 VICTORIA 9106S CORNWALL Y02 24E
BRP DOMINET 9000
BRP DOMINET 364SHFYORK 19H Y02
S JANE 936 55C
MCR 3027 HARLAND 165 ET
BRP MISTY 915

CED 6.9 BW 2.4 WW 68 YW 109 DMI 0.4 SC 1.4 SCF 13.4

MM 23 MCE 5.4 MG 57 MCW 106 UDDR 1.2 TEAT 1.2 CW 92

FAT 0.052 REA 0.46 MARB 0.5 BMI\$ 351 BI\$ 459 CHB\$ 179

This one is hard to let go of being out of one of our best producing cows. Heifer is bunk broke, excellent docility and will come to a 5 gallon bucket. Has not been pushed with feed, she has been on stockpile fescue all winter with some grain. Given Nasalgen3, SafeGaurd wormer, and Blackleg 11-14-23 and boosted 12-2-23 Top 10% in WW, YW, CW, Marb, CHB and top 20% in SC and MCE. Guaranteed open.



Lot 13

14 BBH 103J 801F LYDIA 321L (MDP,DBP)

Cow | P44538185 | 06/01/2023 | 321

Consigned by: BOURBEUSE BEND HEREFORDS

NJW 135U 10Y HOMETOWN 63A ET
BBH 349A 63A COWBOY 801F
FTF MS REVOLUTION 349ANJW 73S W18 HOMETOWN 10Y ET
NJW 4037 34S DURANGO VACA 135U
MSU TCF REVOLUTION 4R
FTF CLASSY LADY 133YJDH AH MILES AHEAD 35F ET
BBH 808F 35F MY MARIA 103J
BBH 602D 502C SWEET TART 808FC DOUBLE YOUR MILES 6077 ET
JDH AH MS 34X VICTOR 33Z45C ET
BBH 302A 4R POWERHOUSE 502C
BBH 355A 26U SWEET THANG 602D

CED 4.5 BW 2.9 WW 65 YW 100 DMI 0.4 SC 1 SCF 18.1

MM 30 MCE 4.2 MG 63 MCW 103 UDDR 1.3 TEAT 1.4 CW 78

FAT 0.022 REA 0.62 MARB 0.17 BMI\$ 393 BI\$ 479 CHB\$ 131

321L is out of a really stout Miles Ahead daughter that did a great job on her first calf. Her sire routinely does a great job for us. She will be easy to find sale day.

15 BBH 0068H 502C LUNA 309L (DBP)

Cow | P44538184 | 02/28/2023 | 309

Consigned by: BOURBEUSE BEND HEREFORDS

MSU TCF REVOLUTION 4R
BBH 302A 4R POWERHOUSE 502C
BBH 166Y 719T LITTLE MISS 302AFELTONS LEGEND 24Z
MSU TCF RACHAEL ET 54N
TH 122 711 VICTOR 719T
FTF M326 MISS 166YNJW 76S 27A LONG RANGE 203D ET
RHF 203D 114 LADY 0068H
YHF 401B LADY 114NJW 135U 10Y HOMETOWN 27A
NJW 55N STARDUST 76S
PRF 88X HIGH ROLLER 401B ET
FTF CLASSY LADY 621S

CED 3.8 BW 2.7 WW 60 YW 92 DMI 0.3 SC 1.4 SCF 18.4

MM 27 MCE 1.8 MG 57 MCW 84 UDDR 1.4 TEAT 1.3 CW 69

FAT 0.022 REA 0.51 MARB 0.03 BMI\$ 376 BI\$ 449 CHB\$ 105

309L stems from breed greats backed by a hard working dam. Her sire is a great Revolution son who marks every daughter with a beautiful udder. Has all the pieces to be a great addition to anyone's herd.



Lot 16

16 WIRTHMOR C555 KILO Y20K {DBP}

Bull | P44407275 | 11/20/2022 | Y20K

Consigned by: *DAY DREAM CATTLE COMPANY*

NJW 73S M326 TRUST 100W ET KCF BENNETT 3008 M326
JDB 100W 507P TRUST C555 ET NJW P606 72N DAYDREAM 73S
 STAR ONLINIA DOMINETTE 507P REMITALL ONLINE 122L
 RB L1 DOMINETTE 4059

LILAC ON TARGET 22S 36C SCHU-LAR ON TARGET 22S
LILAC ASHLEY 36C 172F LILAC SUZANNE M326 702W
 LILAC ASHLEY 34X 58D LOEWEN FOUNDATION 34X
 LILAC LADY WIZ 4R 831Z

CED 0.7	BW 2.8	WW 62	YW 102	DMI 0.3	SC 1.8	SCF 12.2
MM 19	MCE -1.2	MG 50	MCW 101	UDDR 1.3	TEAT 1.3	CW 77
FAT 0.002	REA 0.55	MARB 0.19	BMIS 307	BIIS 387	CHBS 136	

Really nice up and coming herd bull prospect out of JDB 100W TRUST. Moderate frame, dark red with goggle eye genetics in his pedigree. This easy going, docile bull is sure to make a great addition to any herd. His dam is one of our easiest keeping cows, great udder and calving ease. Will be semen tested before sale.



Lot 17

17 DDCC 66589 MACI 232L {MSUDP}

Cow | P44529106 | 03/02/2023 | 232LDDCC

Consigned by: *DAY DREAM CATTLE COMPANY*

R LEADER 6964 HYALITE ON TARGET 936
/S MANDATE 66589 ET R MISS REVOLUTION 1009
 /S LADY DOMINO 0158X SHF RIB EYE M326 R117
 /S LADY DOMINO 652S

LJR MSU 6153 GAINES 113G BOYD 31Z BLUEPRINT 6153
GCC MAGGIE 11H LJR MSU HOPE 250A
 GCC CAROL 701 WF 735 936 LIMELIGHT 4057
 WF 0424 REBA15 #2 3013

CED 7.0	BW 0.1	WW 60	YW 92	DMI 0.2	SC 1.1	SCF 23.1
MM 24	MCE 4.7	MG 54	MCW 115	UDDR 1.3	TEAT 1.4	CW 67
FAT 0.072	REA 0.36	MARB 0.18	BMIS 450	BIIS 537	CHBS 113	

Flashy, goggle-eyed Mandate daughter. Impressionable heifer that is deep, long-sided, and feminine. Show ring ready, this sassy lady is halter broke yet easy going. Will make a great cow for anyone's herd. Mandate is a proven sire for females that work with any herd, don't let this one pass you by, it was hard for us to let her go.

18 FAF WLKR JANICE 27A A34 806F {DLF,HYF,IEF,MDP,DBP}

Cow | P43910749 | 01/06/2018 | 806

Consigned by: *GRAYSON CATTLE COMPANY*

NJW 73S W18 HOMETOWN 10Y ET SHF WONDER M326 W18 ET
NJW 135U 10Y HOMETOWN 27A NJW P606 72N DAYDREAM 73S
 NJW 4037 34S DURANGO VACA THM DURANGO 4037
 NJW P606 80L DAYDREAM 34S ET

KCF BENNETT REVOLUTION X51 MSU TCF REVOLUTION 4R
WALKER LASS X51 7115 A34 KCF MISS PROFICIENT U201
 WALKER MISS 1030 545 7115 KT TOP SECRET 1030
 WALKER MISS P606 06N 545

CED 3.9	BW 3.4	WW 69	YW 109	DMI 0.7	SC 1.1	SCF 20.7
MM 28	MCE -1.5	MG 63	MCW 120	UDDR 1.3	TEAT 1.4	CW 81
FAT 0.032	REA 0.82	MARB 0.27	BMIS 439	BIIS 536	CHBS 140	

Janice 806F is a true power cow that we purchased out of the Walker Hereford sale as a bred heifer. 806F is easy fleshing with a great udder all on a good set of feet. Good calving ease EPD and ranks in the top 10% for WW, YW. Al'd to the popular Innsfail Herefords sire Endorse 4021 1838ET (43984217) on 11/29/2023. PE to FTF Testify 2721K (44452909) from 12/10/23 to 2/10/24. Breeding info available on sale day.



Sire of Lot 18 - NJW 135U 10Y Hometown 27A



Lot 19

19 GPHF JNV LARK 44G 306L {HYP}

Bull | P44522483 | 02/04/2023 | 306L

Consigned by: *GREGORY POLLED HEREFORDS*

HILLS-GALORE 44Z RESOLUTE 128D RST X51 REVOLUTION 4102
WMC 128D RESOLUTE 44G HILLS-GALORE 52R CALLI 44Z
 WMC 719T VICTOR 3D TH 122 711 VICTOR 719T
 WMC Y509 CLEAR WATER 27B

SF 100W RELIANCE 2146 NJW 73S M326 TRUST 100W ET
GPHF JNG FORTUNE 2146 824F SF VICTORIA 114 498
 GPHF ALECIA 743 369A CRR ABOUTTIME 743
 GFF MS LESLIE 67W 177Y

CED -2.6	BW 4.8	WW 60	YW 101	DMI 0.3	SC 1.1	SCF 15.4
MM 21	MCE -1.4	MG 51	MCW 90	UDDR 1.3	TEAT 1.3	CW 66
FAT 0.002	REA 0.37	MARB 0.04	BMIS 331	BIIS 402	CHBS 108	

306L is a very well built herd bull prospect. He is sired by our Resolute son from WMC. He has goggle eyes and he is deep red in color. His BW is 89 lbs and WW 685lbs. He is also broke to tie.

For the health and performance of your herd.

WIND AND RAIN
CATTLE MINERAL



PURINA



Ask your local Purina® dealer for Wind and Rain® mineral or contact Tod Wideman (573)760-2025.



Ensure your mineral investment is utilized

Balanced
Mineral
Vitamin
Nutrition

Consistent
★★★★★
Consumption


Optimal
Performance


Address
Mineral
Deficiencies


W+R
Weather
Resistant

20 GPHF JENNA 90D 121J {HYP}

Cow | P44312048 | 02/14/2021 | 121J

Consigned by: *GREGORY POLLED HEREFORDS*

C&L CT FEDERAL 485T 6Y
LJR MSU 6Y DEMAND 90D
 LJR MSU DARCIE 282B

BKR AUSTIN 84X1 59A
GPHF MISS FREEDA 59A 807F
 GPHF MS LAWMAN 217 1S

KJ HVH 33N REDEEM 485T ET
 C&L MISS JUNIOR 408 1T
 LJR MSU MISSOULA 49X
 LJR QUEEN 226W

BKR XANDER 7084 84X1
 BKR UTLEY 023R 69U
 GPHF LAWMAN 108H 217
 LJR ANGEL 137G

CED 2	BW 3.2	WW 55	YW 79	DMI 0	SC 0.7	SCF 16.2
MM 22	MCE -0.1	MG 50	MCW 68	UDDR 1.4	TEAT 1.5	CW 55
FAT 0.052 REA 0.15 MARB -.01 BMI\$ 320 BIIS 385 CHBS 79						

Lot 20A: Heifer calf born February 21, 2024, sired by LJR MSU James (P44247956).

22 GPHF GRETCHEN 59A 916G {HYP}

Cow | P44106181 | 02/20/2019 | 916G

Consigned by: *GREGORY POLLED HEREFORDS*

BKR XANDER 7084 84X1
BKR AUSTIN 84X1 59A
 BKR UTLEY 023R 69U

BKR XANDER 7084 84X1
GPHF CARA 502C 84X1
 GPHF MS LAWMAN 217 1S

TRM GENETIC CHOICE 7084
 BKR UTOPIA 205M 71U
 KJ C&L J119 LOGIC 023R ET
 BKR PAULETTE 9329 32P

TRM GENETIC CHOICE 7084
 BKR UTOPIA 205M 71U
 GPHF LAWMAN 108H 217
 LJR ANGEL 137G

CED 3.5	BW 2.4	WW 41	YW 69	DMI -0.4	SC 0.9	SCF 14.6
MM 21	MCE 1.5	MG 41	MCW 73	UDDR 1.3	TEAT 1.3	CW 44
FAT 0.022 REA -0.09 MARB 0.07 BMI\$ 296 BIIS 353 CHBS 87						

916G bred to FTF Performer 1207J (P44235483). Will have calf at side on sale day.

24 LJR MSU WILLA 103G {HYP}

Cow | P44029612 | 02/13/2019 | 103G

Consigned by: *GREGORY POLLED HEREFORDS*

LJR 023R WHITMORE 10W
LJR MSU 10W AMBUSH 206A
 LJR MSU MADISON 105Y

BR BENNETT N106 OF 5227 0178
LJR MSU BIRDEE 102B
 LJR MARIA 49S

KJ C&L J119 LOGIC 023R ET
 LJR MICKEY 278N
 LJR 872G NOLAN 95N
 LJR WINONA 238T

KCF BENNETT 774 N106
 BR MS 767G 2091 5227
 LJR 179A MARIAS 260M
 LJR LEANNE 294N

CED 3	BW 2.3	WW 56	YW 93	DMI 0.4	SC 0.6	SCF 13.5
MM 20	MCE 2.2	MG 48	MCW 78	UDDR 1.3	TEAT 1.2	CW 67
FAT 0.002 REA 0.41 MARB 0 BMI\$ 294 BIIS 358 CHBS 100						

103G bred back to FTF Performer 1207J (P44235483) from 11/24/2023 to 02/21/2024. **Lot 24A:** Steer calf born 9-11-23.

26 HCF GM F480 WOLFF J56 {DLF,HYF,IEF,MSUDF,MDF,DBF}

Bull | P44351447 | 04/01/2022 | J56



Consigned by: *HATCHEE CREEK FARMS*

CHURCHILL KICKSTART 501C ET
KACZ 58Y FRANCHISE 501C F480
 NJW ABRA 100W SERENITY 58Y ET

STAR HCF 62J THUNDER 279U ET
HCF GM JULES
 RHF VICTRA 0838 444P

CHURCHILL RED BULL 200Z
 HVH OKSANA 4L 33N
 NJW 73S M326 TRUST 100W ET
 SDL VLY 7C SERENADE 139J

STAR SS THUNDER LT 62J
 RCH MISS ADVANCE 1021
 THM TAYLOR MADE 0838
 JLG VICTRA 434 V 5582

CED 3.9	BW 0.6	WW 55	YW 89	DMI -0.1	SC 1	SCF 12.3
MM 23	MCE -2.8	MG 50	MCW 89	UDDR 1.3	TEAT 1.3	CW 69
FAT 0.052 REA 0.25 MARB 0.02 BMI\$ 289 BIIS 354 CHBS 111						

J56 a really gentle two-year-old bull. He has been haltered, semen checked, DNA profiled and trich tested. We raised his dam, and just calved again at 10 years of age. Homozygous Polled. BW:75 lbs., WW:705 lbs., YW:1090 lbs.

21 GPHF JALIAH 90D 109J

Cow | P44312023 | 02/05/2021 | 109J

Consigned by: *GREGORY POLLED HEREFORDS*

C&L CT FEDERAL 485T 6Y
LJR MSU 6Y DEMAND 90D
 LJR MSU DARCIE 282B

BKR AUSTIN 84X1 59A
GPHF EVELYN 59A 730E
 GPHF MS MANNHEIM 92R-246Z

KJ HVH 33N REDEEM 485T ET
 C&L MISS JUNIOR 408 1T
 LJR MSU MISSOULA 49X
 LJR QUEEN 226W

BKR XANDER 7084 84X1
 BKR UTLEY 023R 69U
 SC VICTOR 262D S6
 GPHF MS PRO BOSS E127 450

CED 5.7	BW 1.7	WW 45	YW 79	DMI -0.1	SC 0.6	SCF 15.2
MM 19	MCE 0	MG 42	MCW 69	UDDR 1.2	TEAT 1.4	CW 48
FAT 0.052 REA 0.04 MARB 0.04 BMI\$ 303 BIIS 362 CHBS 86						

Lot 21A: Heifer calf born February 16, 2024, sired by LJR MSU James (P44247956).

23 BSF GWEN 85A 912G {HYP}

Cow | P44106179 | 02/15/2019 | 912G

Consigned by: *GREGORY POLLED HEREFORDS*

NJB 3060 GAUCHO 829
RF GAUCHO LADD 85A
 RF GENETIC LADY 20L 84W

LJR 023R LOGIC 67W
BSF BETH 484B 67W
 SF 610 VICTRA PLUS 929

THM SLEEP EASY 3060
 C&L NJB BELLE 30N
 BKR TRIPLE PLUS 73C 20L
 RF 73C ROSE 67R

KJ C&L J119 LOGIC 023R ET
 LJR WESLYNN 60P
 CMF 662M COW BOSS 779R
 SF VICTORIA 114 610

CED 4.9	BW 1.2	WW 49	YW 76	DMI 0	SC 0.7	SCF 13.1
MM 23	MCE 2.2	MG 48	MCW 75	UDDR 1.2	TEAT 1.2	CW 64
FAT 0.042 REA 0.21 MARB 0 BMI\$ 287 BIIS 345 CHBS 96						

Lot 23A: Bull calf born February 17, 2024, sired by FTF Performer 1207J (P44235483).

25 GPHF MISS FLORENCE 2146 827F {HYP}

Cow | P43977375 | 02/24/2018 | 827F

Consigned by: *GREGORY POLLED HEREFORDS*

NJW 73S M326 TRUST 100W ET
SF 100W RELIANCE 2146
 SF VICTORIA 114 498

SC VICTOR 262D S6
GPHF BECKY S6 410B
 GPHF MS LAWMAN 217 1S

KCF BENNETT 3008 M326
 NJW P606 72N DAYDREAM 73S
 JMS VICTOR 892 114
 SF MISS DOM 528J 246

CMF 103T VICTOR 262D
 DIRT ROAD TORI 9329 169H
 GPHF LAWMAN 108H 217
 LJR ANGEL 137G

CED -2.2	BW 4.2	WW 44	YW 80	DMI -0.4	SC 0.7	SCF 18.3
MM 21	MCE -1	MG 42	MCW 85	UDDR 1.3	TEAT 1.2	CW 53
FAT 0.022 REA 0.12 MARB 0.05 BMI\$ 368 BIIS 427 CHBS 102						

Lot 25A: Heifer calf born February 11, 2024, sired by FTF Performer 1207J, (P44235483).



Lot 26



Lot 27

27 HCF GM 121J MEGYN J69 {HYP,DBP}

Cow | P44448543 | 04/01/2023 | J69

Consigned by: *HATCHEE CREEK FARMS*

/S MANDATE 66589 ET
FTF MAXIMUS 121J
 FTF MS HOMELAND 930G

R LEADER 6964
 /S LADY DOMINO 0158X
 KCF BENNETT HOMELAND C34
 FTF MS PROSPECTOR 706E

MOHICAN THM EXCEDE Z426
CMH DELIGHT 9147
 LILAC MISS DELIGHT 34X 844Z

TH 133U 719T UPGRADE 69X
 NJW M326 UNFORGETTABLE
 76W ET
 LOEWEN FOUNDATION 34X

CED 4.9	BW 0.9	WW 60	YW 96	DMI 0.3	SC 1.3	SCF 22
MM 28	MCE 1.2	MG 58	MCW 95	UDDR 1.4	TEAT 1.5	CW 65
FAT 0.042	REA 0.23	MARB 0.12	BMI\$ 425	BI\$ 507	CHBS 107	

J69 is a nice heifer, halter broke and gentle. OCV'D. As you check her pedigree, you will find some exceptional animals in it. Make a nice heifer for 4-H or FFA. SELLS OPEN, BW:65 lbs. Make sure to check her udder and teat scores.



Lot 28

28 KCC 110C ZANEY G705 J401 {DLP,HYP}

Cow | P44537990 | 08/04/2021 | J401

Consigned by: *KACZMAREK CATTLE COMPANY*

SHF ZANE X51 Z115
KACZ 4K E202 ZILLION Z115 G705
 KACZ 95C SPARK 501C E202

KCF BENNETT REVOLUTION X51
 SHF FOREVER P20 X172
 CHURCHILL KICKSTART 501C ET
 KACZ18U MISS TRUST 100W 95C ET

JWR 779 MR PROFICIENT 110X
KACZ 226 PROMISE 110X 110C
 HYALITE 22S LASS 226

KCF BENNETT PROFICIENT U144
 WALKER FJB MISS 8E 9805 779 ET
 SCHU-LAR ON TARGET 22S
 HYALITE TS LASS 909

CED 9.1	BW 0.4	WW 54	YW 86	DMI 0.2	SC 1.1	SCF 16.9
MM 29	MCE 6.6	MG 56	MCW 90	UDDR 1.2	TEAT 1.2	CW 63
FAT -0.008	REA 0.42	MARB 0.24	BMI\$ 364	BI\$ 443	CHBS 124	

This two-year-old has great configuration. Top10% calving ease and maternal calving ease. She has powerful genetics including SHF ZANE Z115 and Churchill Kickstart 501C. She is bred to KCC E251 OXADYNE F33 K232 - a son of Lowen LF FERDINAND 33N F33.

29 COFO MS 6Y 3B FELICITY F967 {HYP}

Cow | P43979200 | 11/19/2018 | F967

Consigned by: *KACZMAREK CATTLE COMPANY*

C&L CT FEDERAL 485T 6Y
C & L FEDERAL 6Y 3B
 C&L TRILLIUM M326 22W

LLF 486S FORCE K2
C OF O MS K2 38
 C OF O MS VIC 8178 355K

KJ HVH 33N REDEEM 485T ET
 C&L MISS JUNIOR 408 1T
 KCF BENNETT 3008 M326
 LAKE BJJ IRIS 209N

GK 327L VINDICATOR 486S
 LLF PROSPECT ROSE
 TRM C048 334 8178
 C OF O MS VIC D9 204H

CED 2.9	BW 2.9	WW 53	YW 88	DMI 0	SC 0.6	SCF 11.4
MM 6	MCE 1.2	MG 32	MCW 94	UDDR 1.4	TEAT 1.4	CW 51
FAT 0.002	REA 0.02	MARB -.01	BMI\$ 249	BI\$ 309	CHBS 86	

Five-year-old with College of the Ozarks breeding. **Lot 29A:** Heifer calf born 1/31/24. Grandsire is Churchill Rough Rider 719E. AHA # 44532374 - KCC F967 Melicity G749 M16.

30 LPH 1216J TRINA 58L {DLF,HYF,IEF,MSUDF,DBP}

Cow | P44527015 | 03/05/2023 | 58L

Consigned by: *LIZZIE'S POLLED HEREFORDS*

FTF TESTIMONY 828F
FTF TESTIMONY 0707H
 FTF CLASSY LADY 7623E ET

HUTH FTF TORQUE C002
FTF TONYA 1216J
 FTF FABULOUS LEA 3407A

EFBEEF TFL U208 TESTED X651 ET
 FTF PRIMETIME MISS 608D
 DR WORLD CLASS 517 10H
 FTF TRENA 366N

SHF YORK 19H Y02
 HUTH T013 DOMINETTE Z016
 FTF M326 FABRICATOR 838U
 FTF LEANNA 648S

CED 2.9	BW 3.1	WW 67	YW 106	DMI 0.6	SC 1.1	SCF 21.4
MM 26	MCE 1.4	MG 60	MCW 101	UDDR 1.3	TEAT 1.3	CW 72
FAT 0.052	REA 0.46	MARB 0.14	BMI\$ 424	BI\$ 513	CHBS 114	

If you're looking for a calm, mild-mannered little heifer, this is your girl. She is very feminine looking with good pigment in both eyes. Selling open, ready for use in your program.

31 FTF PAULINA 1108J {DLF,HYF,IEF,MSUDF,DBP}

Cow | P44235465 | 03/24/2021 | 1108

Consigned by: *LIZZIE'S POLLED HEREFORDS*

FTF PROSPECTOR 145Y
FTF PORTERHOUSE 9408G ET
 FTF VERONICA 227Z

FTF QUALITY BEEF 330A
FTF QUALITY QUEEN 7103E
 FTF ROSALINDA 5100C

HUTH PROSPECTOR K085
 FTF CHICK A BOOM 7227T
 TH 122 711 VICTOR 719T
 FTF FABULOUS 097X

KJ C&L J119 LOGIC 023R ET
 FTF ROSE RANGER 018X
 FTF REVOLUTION 2429Z ET
 FTF VERONICA 232Z

CED 1.4	BW 3	WW 74	YW 118	DMI 0.6	SC 0.6	SCF 19
MM 38	MCE 3.7	MG 75	MCW 114	UDDR 1.3	TEAT 1.2	CW 82
FAT 0.012	REA 0.5	MARB 0.05	BMI\$ 404	BI\$ 492	CHBS 125	

Paulina 1108J is a dark red cow that has nice markings. She has good length and a tight udder with good eye pigmentation. Sells open. **Lot 31A:** Bull calf, sired by FTF Testimony 828F (43911635), born 2-27-24, BW 75 lbs.

32 LPH LADY PRIME 8J {DBP}

Cow | P44279129 | 02/25/2021 | 8J

Consigned by: *LIZZIE'S POLLED HEREFORDS*

SHF RIB EYE M326 R117
FTF PRIME PRODUCT 226Z
 FTF CLASSIC MISS 0206X

LPH 023R 70S LONGMIRE 21C
CCR 18B RACHEL 21C 39E
 LPH RACHEL 18B


KCF BENNETT 3008 M326
 HVH MISS HUDSON 83K 8M
 FTF CLASS ACT 629S
 FTF ENYA 303N

KJ C&L J119 LOGIC 023R ET
 LJR MARIA 70S
 MSU TCF REVOLUTION 4R
 CES SCARLETT 647 K51

CED 0.8	BW 2	WW 57	YW 89	DMI 0	SC 1.3	SCF 15.8
MM 32	MCE 3	MG 60	MCW 86	UDDR 1.2	TEAT 1.1	CW 71
FAT 0.002	REA 0.5	MARB 0.22	BMI\$ 362	BI\$ 441	CHBS 135	

Lady Prime 8J is sure to catch your eye with her flashy markings and deep barreled body. She is on the lighter red side and tightly uddered. Bred Al to MSU TCF Revolution 4R (42593689) on 12/14/23. Pasture exposed to our Show-Me-Select qualified Angus herd bull, BWR Enhance J35(20496088) 12/23/23 - 2/27/24. Preg checked safe to Al. Pasture exposed to our herd bull, LPH 4R Bandit 31J (P44279010) 5/28/23 - 10/20/2023. Preg checked 2nd stage on 2/27/24.

33 **FTF CONNIE 1217J** {DLF,HYF,IEF,MSUDF,DBP}

Cow | P44235493 | 01/18/2021 | 1217 

Consigned by: *LIZZIE'S POLLED HEREFORDS*

FTF PROSPECTOR 145Y
FTF CONFIDENCE 6113D
FTF VERONICA 4107B

FTF REVOLUTION 2429Z ET
FTF ROSALINDA 573C
OVF PRETTY MISS 702T

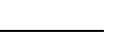
HUTH PROSPECTOR K085
FTF CHICK A BOOM 7227T
TH 122 711 VICTOR 719T
FTF MS REVOLUTION 2424Z

MSU TCF REVOLUTION 4R
JR MISS RIGHT 950J
FTF ENHANCER 540R
OVF MADELINE ROSE 504R

CED 5.9	BW 1.8	WW 70	YW 113	DMI 0.4	SC 1.1	SCF 20.3
MM 34	MCE 6.7	MG 69	MCW 133	UDDR 1.2	TEAT 1.2	CW 73
FAT 0.082	REA 0.39	MARB 0.25	BMI\$ 423	BI\$ 523	CHBS 128	

Connie 1217J is moderate-framed with a little height. She is dark red, and has good udder quality. Bred AI to FTF Testimony 828F (43911635) on 5/18/23. Pasture exposed to LPH 4R Bandit 31J (44279010) 5/28/23 to 10/20/2023. Checked safe AI. Will calve by sale day.

35 **CCR C16 PANSY 12A 27H** {HYP,DBP}

Cow | P44192245 | 02/09/2020 | 27H 

Consigned by: *LIZZIE'S POLLED HEREFORDS*

CRR 719 CATAPULT 109
3V KAT DADDY 109 C16 ET
LUDWIG WHITEHAWK MANGO

MSU TCF REVOLUTION 4R
LPH 4R BIG PANSY 28X
BIG U055 PANSY 28X

TH 122 711 VICTOR 719T
CRR 4037 ECLIPSE 808
WHITEHAWK 4R REVOLUTION 2328
LUDWIG MANGO U04

FELTONS LEGEND 242
MSU TCF RACHAEL ET 54N
JDB BIG CHANGE U055
BB PANSY 1N


CED 10.6	BW -0.9	WW 49	YW 78	DMI 0.1	SC 1	SCF 13.4
MM 27	MCE 4.9	MG 52	MCW 74	UDDR 1.2	TEAT 1.2	CW 66
FAT 0.012	REA 0.46	MARB 0.11	BMI\$ 307	BI\$ 370	CHBS 115	

This mama is sure to please. She raises great calves year to year. She's dark red with a small to moderate frame. Bred AI to MSU TCF Revolution 4R (42593689) on 12/14/23. Pasture exposed to our Show-Me-Select qualified Angus herd bull, BWR Enhance J35 (20496088) 12/23/23 to 2/27/24. Preg checked safe to AI.



Lot 37

34 **CCR C16 MS DAZZLE 204X 43H** {DBP}

Cow | P44192261 | 02/29/2020 | 43H 

Consigned by: *LIZZIE'S POLLED HEREFORDS*

CRR 719 CATAPULT 109
3V KAT DADDY 109 C16 ET
LUDWIG WHITEHAWK MANGO

CRR ABOUTTIME 743
LJR MSU DAZZLE 204X
LJR BROOKE 69N


TH 122 711 VICTOR 719T
CRR 4037 ECLIPSE 808
WHITEHAWK 4R REVOLUTION 2328
LUDWIG MANGO U04

THM DURANGO 4037
CRR D03 CASSIE 206
LJR 509 BROOKS 243G
LJR BELLE 26B

CED 8.6	BW -0.4	WW 47	YW 70	DMI -0.1	SC 1.1	SCF 18.1
MM 23	MCE 2	MG 47	MCW 87	UDDR 1.2	TEAT 1.1	CW 57
FAT -0.018	REA 0.26	MARB 0.07	BMI\$ 366	BI\$ 428	CHBS 102	

This deep barreled, dark red, small to moderate sized mama will be a great addition to your herd. She is tightly uddered and has good eye pigmentation. Pasture exposed to our herd bull, LPH 4R Bandit 31J (P44279010) 5/28/23 - 10/20/2023. Preg checked 2nd stage on 2/27/24.

36 **MMM MARY K01** {DLF,HYF,IEF,MSUDF}

Cow | P44436284 | 01/26/2022 | K01 

Consigned by: *MCCORKILL FAMILY FARM*

SHF RIB EYE M326 R117
FTF PRIME PRODUCT 226Z
FTF CLASSIC MISS 0206X

LJR MSU 179R BRAVADO 347B
MMM KATE H11
LJR WINONA 160U

KCF BENNETT 3008 M326
HVH MISS HUDSON 83K 8M
FTF CLASS ACT 629S
FTF ENYA 303N

LJR N356 RANCHER 179R
LJR MSU HAZEL 35Y
CMF 584T FRONTIER 634L
LJR MARIA 262R

CED 1.3	BW 2.7	WW 59	YW 94	DMI 0.1	SC 1.4	SCF 16.2
MM 32	MCE 0.1	MG 62	MCW 95	UDDR 1.2	TEAT 1.2	CW 67
FAT 0.002	REA 0.23	MARB 0.3	BMI\$ 363	BI\$ 451	CHBS 136	

Here's your opportunity to take home a great cow prospect! Her maternal granddam, 160U, was a true matriarch, producing loads of stout daughters for us. Her young dam has been true to that form. K01 is broody and has the numbers to back her up, ranking in the top 20% or better for DMI, Scrotal, Milk, M&G, Fat, Marbling, and \$CHB EPD's. **Lot 36A:** Bull calf, MMM J18 Majestic M07, born on 02/21/24 (reg#44537339), sired by MMM G02 Journey J18.



Lot 36

37 **MMM GRACE J22**

Cow | P44297170 | 11/01/2021 | J22

Consigned by: *MCCORKILL FAMILY FARM*

FTF PRIME PRODUCT 226Z
MMM 226Z GROUND FLOOR G02
MMM ELSA E01

LJR MSU 6Y DAKOTA 121D
MMM FLORA G12
LJR MSU LADY ADVANCE 322A

SHF RIB EYE M326 R117
FTF CLASSIC MISS 0206X
NJW 73S W18 HOMETOWN 10Y ET
LJR HAZEL 42U

C&L CT FEDERAL 485T 6Y
LJR QUEEN 70U
CMF CS U408 PROGRESSION Y449
LJR MSU DEW DOMINO 202Y

CED 3.9	BW 1.6	WW 58	YW 89	DMI 0.2	SC 1.2	SCF 18.7
MM 26	MCE 2.8	MG 55	MCW 85	UDDR 1.2	TEAT 1.2	CW 69
FAT 0.032	REA 0.35	MARB 0.22	BMI\$ 390	BI\$ 474	CHBS 123	

Grace has the makings of a calf raiser! Her maternal granddam was Molly's pick from the Journagan Safe line-up to start her own herd and she picked well! J22 should be by a female that will work in anyone's program. She carries a well-balanced EPD profile with most traits ranking in the top 1/3 of the breed. **Lot 37A:** Heifer calf, MMM Martha M03 (reg# 44537334), born 2/5/24 sired by LIII NCC E158 2038, should be the type to build around.



**SPECIAL RATE FOR
CENTRAL MISSOURI
POLLED HEREFORD
BREEDERS SALE
ATTENDEES**

Day's Inn Cuba
97 Oak Drive, Cuba, MO 65453
Telephone: 573-885-0100 Fax: 573-885-6461
SAM PATEL, general manager



GONE ROGUE EMBROIDERY



GONEROGUECATTLE@GMAIL.COM
WWW.GONEROGUEEMBROIDERY.COM

CUSTOM ENGRAVED

EAR



TAGS

TAGS THAT NEVER FADE OR PEEL MADE TO LAST!



CUSTOM EMBROIDERY



LASER ENGRAVING SERVICES

Gone Rogue



38 LJR MSU 126F KENYON 341K

Bull | P44394775 | 09/06/2022 | 341K

Consigned by: PHILLIPS-RENNER FARMS

KT BUILT TUFF 1010
NJW 113D 1010 TOUGH 126F
 NJW 91H 100W RITA 113D ET

NJW 98S DURANGO 44U
 KT MS R117 RIB EYE 9177
 NJW 73S M326 TRUST 100W ET
 REMITALL RITA 91H

LJR MSU X51 BOSCH 371B
LJR MSU VIXEN 336F
 LJR MSU PAULA 377Z

KCF BENNETT REVOLUTION X51
 LJR MORGANN 385X
 SB 54E 75R FUSION 138X ET
 LJR LORIE 362R

CED 1	BW 2.7	WW 60	YW 94	DMI 0.4	SC 1.5	SCF 21.5
MM 30	MCE -1.8	MG 60	MCW 75	UDDR 1.3	TEAT 1.4	CW 75
FAT 0.022	REA 0.43	MARB 0.17	BMI\$ 431	BIIS 514	CHBS 124	

Here is a nice herd sire prospect out of the LJR MSU program. He was purchased alongside dam in their '22 sale. 341K is sired by NJW Tough and out of a productive Bosch daughter. He is smooth, polled and pigmented. He is sound structured and well-balanced. He could do a lot of good in both commercial and registered programs. BW 83 pounds.



Lot 38

39 PRF 81E FREE COUNTRY 136J

Bull | P44339041 | 10/20/2021 | PRF136J

Consigned by: PHILLIPS-RENNER FARMS

CHURCHILL SENSATION 028X
NJW 160B 028X HISTORIC 81E ET
 NJW 73S 38W DAYDREAM 160B

UPS DOMINO 3027
 CHURCHILL LADY 7202T ET
 NJW 76S P20 BEEF 38W ET
 NJW P606 72N DAYDREAM 73S

R LEADER 6964
RHF 6964 ROSALEE X395 8119F ET
 GRANDVIEW CMR MIS P606 X395 ET

HYALITE ON TARGET 936
 R MISS REVOLUTION 1009
 PW VICTOR BOOMER P606
 GERBER 412T ROSY LANE 065K

CED 3.7	BW 2	WW 62	YW 92	DMI 0.6	SC 1.1	SCF 24.4
MM 38	MCE -1.6	MG 69	MCW 69	UDDR 1.4	TEAT 1.5	CW 74
FAT 0.052	REA 0.74	MARB 0.08	BMI\$ 466	BIIS 547	CHBS 106	

Check out this goggle-eyed, smooth polled son of Historic 81E! He's moderate framed, dark red, and made right. He's out of one of our top cows who is a Leader daughter and goes back to the Rosy Lane cow family. Balanced set of numbers across the board. I wanted to keep him to use myself but we have too much related to him...retaining dam and two maternal sisters in herd. Halter broke. He was also Reserve Supreme Champion Bull at our FFA District Fair and Ray County Fair. BW 85 pounds.



Lot 39

40 PRF 657D MISS CONNIE 333L (HYF,DBP)

Cow | P44537206 | 10/27/2023 | PRF333L

Consigned by: PHILLIPS-RENNER FARMS

C ETF WILDCAT 4248 ET
CHURCHILL GUNPOWDER 657D ET
 CHURCHILL LADY 002X ET

NJW 73S M326 TRUST 100W ET
 RPH MAIDEN 95T
 GOLDEN OAK OUTCROSS 18U
 CHURCHILL LADY 600S ET

ABRA 6C 113 JUST MY BOY 89E
PRF 89E T'S BONNIE 031H
 EF BONNIE M326 T113

ABRA 16A JUSTICE 6C ET
 H H JEWEL 113 ET
 KCF BENNETT 3008 M326
 EF CANDY 262D M16

CED 4.2	BW 3.1	WW 58	YW 94	DMI 0.2	SC 0.9	SCF 12.3
MM 32	MCE 2.4	MG 61	MCW 90	UDDR 1.2	TEAT 1.2	CW 81
FAT 0.002	REA 0.7	MARB 0.09	BMI\$ 313	BIIS 381	CHBS 135	

Adjust your eyes here! A late October born heifer calf sired by Churchill Gunpowder out of a daughter of our senior herd sire "ABRA Just My Boy 89E", a son of Abrokadabra's Jewel cow. 333L's dam is the last born daughter of our ol' reliable T113 cow. Juniors sit up and take notice here...she could make a nice show prospect and then turn around and make you a nice cow. Halter broke. BW 72 pounds.



Lot 40

41 PRF 015H KATHY 316L (DBP)

Cow | 44475497 | 03/16/2023 | PRF316L

Consigned by: PHILLIPS-RENNER FARMS

R LEADER 6964
PRF 6964 WAR ROOM 064 015H ET
 WALKER MISS R117 545 064 ET

HYALITE ON TARGET 936
 R MISS REVOLUTION 1009
 SHF RIB EYE M326 R117
 WALKER MISS P606 06N 545

PRF 485T R U READY 4 THIS 92Y
PRF 92Y KASSIE 415B
 PRF 23N KASEY 27S

KJ HVH 33N REDEEM 485T ET
 PRF 4037 MISS DURANGO 9028W
 WSF LCR RCR ONSTAR 23NET
 LJR KAYLA 266N

CED 8.1	BW 1.4	WW 48	YW 79	DMI 0.2	SC 0.9	SCF 18.8
MM 24	MCE 5.7	MG 48	MCW 89	UDDR 1.2	TEAT 1.1	CW 63
FAT 0.032	REA 0.33	MARB 0.16	BMI\$ 380	BIIS 450	CHBS 111	

316L is a daughter of herd sire War Room, a Leader son, and out of a Redeem granddaughter. She is short marked, pigmented, and well made. She sells open ready to breed to the bull of your choice. Halter broke. Dehorned. BW 67 pounds.



Lot 41

42 PRF 6964 LACEY 064 019H ET (DBP)

Cow | P44220800 | 02/17/2020 | PRF019H

Consigned by: PHILLIPS-RENNER FARMS

HYALITE ON TARGET 936
R LEADER 6964
 R MISS REVOLUTION 1009

SCHU-LAR ON TARGET 22S
 HYALITE TS LASS 310
 MSU TCF REVOLUTION 4R
 R MISS WRANGLER 3007

SHF RIB EYE M326 R117
WALKER MISS R117 545 064 ET
 WALKER MISS P606 06N 545

KCF BENNETT 3008 M326
 HVH MISS HUDSON 83K 8M
 PW VICTOR BOOMER P606
 WPHF DRF EMMA 122L 06N ET

CE 9.9	BW 0.5	WW 54	YW 84	DMI 0.3	SC 1.2	SCF 23.3
MM 24	MCE 7.3	MG 51	MCW 91	UDDR 1.3	TEAT 1.3	CW 70
FAT 0.042	REA 0.49	MARB 0.22	BMI \$ 458	BI \$ 540	CH \$ 124	

019H is a full sister to herd bull, War Room (Leader x 064). She is well-made, tight-uddered and goggle-eyed. Her brother has put several nice calves in our herd and also in Allen Yankee's herd. We also have a maternal sister in production and other females tracing to the 064 donor in production so I feel we can offer her. **Lot 42A:** Heifer calf, sired by RHF 8Y HG X395 0061H ET, PRF 0061H MACEY 416M born 2/27/2024, BW 67 pounds.



Lot 42

43 PRF 4248 MISS WILDCAT 727E (HYP)

Cow | P43951821 | 09/17/2017 | PRF727E

Consigned by: PHILLIPS-RENNER FARMS

NJW 73S M326 TRUST 100W ET
C ETF WILDCAT 4248 ET
 RPH MAIDEN 95T

KCF BENNETT 3008 M326
 NJW P606 72N DAYDREAM 73S
 SHF PHOENIX M33 P68
 C MS GAME PLAN 5161

KCF BENNETT 3008 M326
EF BONNIE M326 T113
 EF CANDY 262D M16

RRH MR FELT 3008
 KCF MISS 459 F284
 CMF 103T VICTOR 262D
 EF BETH F243 2G J124

CE 1	BW 3.4	WW 54	YW 90	DMI 0.1	SC 1.2	SCF 13.3
MM 28	MCE 0.8	MG 55	MCW 77	UDDR 1.2	TEAT 1.2	CW 76
FAT 0.012	REA 0.58	MARB 0.3	BMI \$ 333	BI \$ 413	CH \$ 150	

Here's a smooth polled, pigmented daughter of Wildcat out of my favorite ol' girl, T113. She was in herd past 13 years old. 727E has a November born bull calf sired by Revolution (Selling as Lot 43A). She is pasture exposed from 2/26/2024 to RHF 8Y HG X395 0061H ET, a full brother to Rose Garden 4067B who was Mohican West's pick out of the Roth Dispersal in 2020. Halter broke.



Lot 43

43A PRF 4R LINEMAN 334L (HYP, DBP)

Bull | P44537120 | 11/18/2023 | PRF334L

Consigned by: PHILLIPS-RENNER FARMS

FELTONS LEGEND 242
MSU TCF REVOLUTION 4R
 MSU TCF RACHAEL ET 54N

FELTONS DOMINO 774
 FELTONS G15
 REMITALL ONLINE 122L
 HH MISS ADV 786G 1ET

C ETF WILDCAT 4248 ET
PRF 4248 MISS WILDCAT 727E
 EF BONNIE M326 T113

NJW 73S M326 TRUST 100W ET
 RPH MAIDEN 95T
 KCF BENNETT 3008 M326
 EF CANDY 262D M16

CE 6.2	BW 1.7	WW 56	YW 89	DMI 0.4	SC 1.2	SCF 12.9
MM 25	MCE 3.9	MG 53	MCW 93	UDDR 1.3	TEAT 1.3	CW 77
FAT 0.032	REA 0.78	MARB 0.26	BMI \$ 321	BI \$ 399	CH \$ 139	

Well-made, polled, pigmented son of Revolution. Nice set of numbers too. Halter broke. 67 pound BW.



Lot 44

44 RC 106G MARIGOLD 34BG

Cow | P44501628 | 03/24/2023 | RC

Consigned by: RISING CREEK HEREFORDS

R LEADER 6964
BB 6964 LEADER 106G
 BB 0150 PERFECT CHARM 1461

HYALITE ON TARGET 936
 R MISS REVOLUTION 1009
 H H PERFECT TIMING 0150 ET
 BB P606 BUTTERFLY 1102

3D ROBIN HOOD 210T
CR 210T IVY 34B
 4 STAR SASSAFRASS 34W

ALLENDALE ROBIN HOOD
 3D KRISTI P606 210S
 LJR 634L TACKETT 93T
 DFF MS MADAM VICTRA BOOMR

CE -2.1	BW 3.6	WW 57	YW 94	DMI 0.2	SC 1	SCF 15.1
MM 24	MCE 0.2	MG 52	MCW 105	UDDR 1.3	TEAT 1.2	CW 65
FAT 0.022	REA 0.4	MARB 0.03	BMI \$ 326	BI \$ 394	CH \$ 102	

Another solid Leader granddaughter from our replacement pen. Marigold comes from one of my favorite maternal lines. I wouldn't let this one go if we had the pasture space to keep her. She sells open, ready for the bull of your choice this summer.

WARNING: Under Missouri Law, an equine activity sponsor, an equine professional, a livestock activity sponsor, a livestock owner, a livestock facility, a livestock auction market, or any employee thereof is not liable for an injury to or the death of a participant in equine or livestock activities resulting from inherent risks of equine or livestock activities pursuant to the revised statutes of Missouri.

Central Missouri Polled Hereford Breeder's Association



Lot 45

45 RC 106G HARPER 4DEF {HYP}

Cow | P44501626 | 03/16/2023 | RC

Consigned by: *RISING CREEK HEREFORDS*

R LEADER 6964
BB 6964 LEADER 106G
 BB 0150 PERFECT CHARM 1461

HYALITE ON TARGET 936
 R MISS REVOLUTION 1009
 H H PERFECT TIMING 0150 ET
 BB P606 BUTTERFLY 1102

MB R001 LEGEND 993
RC 993 LEGENDS AMELIA 4DE
 SWSF SORENS RALEIGH RAIGHN

JDB 242 LEGEND R001
 JDB E87 VICTRA J113
 HCF A31 TURN KEY SOREN 403
 SWSF CHANDLERS RAIGHN

CED 0.2	BW 3	WW 51	YW 82	DMI 0.1	SC 0.7	SCF 16.8
MM 22	MCE 1.5	MG 48	MCW 83	UDDR 1.2	TEAT 1.2	CW 58
FAT 0.012	REA 0.27	MARB 0.09	BMI\$ 344	BI\$ 411	CH\$ 100	

Harper is another Leader granddaughter. She is backed by Legend 242 and Turn Key blood on her maternal side. She's the calmest heifer in the pen, she would be great for a junior to add to or begin their herd. She sells open, ready for the bull of your choice this summer.

46 RC 106G KENNEDY 10CBE {HYP}

Cow | P44494066 | 11/09/2022 | RC

Consigned by: *RISING CREEK HEREFORDS*

R LEADER 6964
BB 6964 LEADER 106G
 BB 0150 PERFECT CHARM 1461

MB R001 LEGEND 993
RISING CREEK RAEGAN 10CB
 CR 210T SCARLETT 10C

HYALITE ON TARGET 936
 R MISS REVOLUTION 1009
 H H PERFECT TIMING 0150 ET
 BB P606 BUTTERFLY 1102

JDB 242 LEGEND R001
 JDB E87 VICTRA J113
 3D ROBIN HOOD 210T
 SWSF CHANDLERS RAIGHN

CED -4.2	BW 3.5	WW 54	YW 86	DMI 0.2	SC 0.7	SCF 17.1
MM 24	MCE -3.4	MG 51	MCW 92	UDDR 1.3	TEAT 1.3	CW 60
FAT 0.022	REA 0.32	MARB 0.04	BMI\$ 348	BI\$ 415	CH\$ 95	

Kennedy is from a maternal line four generations deep on our farm. Her granddam is still in production at twelve years of age while raising the biggest calf consistently every year. Longevity is definitely in her blood. Her sire is a moderate-framed, heavy muscled Leader 6964 son. If you're looking for a staple female in your herd for years to come, look Kennedy up on sale day. Al'd on January 14, 2024 to NJW 160B 028X Historic 81E ET. Pasture exposed to our Colorado 15G son from Aufdenburg Polled Herefords and our Revolution bred black Hereford from Crescent Herefords from 2/4/24 to 3/9/24. Date and calf color will determine sire.



Lot 46

47 RC 106G ROSE 4DBH {HYP}

Cow | P44494065 | 10/24/2022 | RC

Consigned by: *RISING CREEK HEREFORDS*

R LEADER 6964
BB 6964 LEADER 106G
 BB 0150 PERFECT CHARM 1461

3D ROBIN HOOD 210T
RC 210T ROBINS ISABELLE 4DB
 SWSF SORENS RALEIGH RAIGHN

HYALITE ON TARGET 936
 R MISS REVOLUTION 1009
 H H PERFECT TIMING 0150 ET
 BB P606 BUTTERFLY 1102

ALLENDALE ROBIN HOOD
 3D KRISTI P606 210S
 HCF A31 TURN KEY SOREN 403
 SWSF CHANDLERS RAIGHN

CED -3.1	BW 4.2	WW 58	YW 90	DMI 0.3	SC 0.8	SCF 16.2
MM 25	MCE -1.9	MG 53	MCW 103	UDDR 1.2	TEAT 1.2	CW 64
FAT 0.012	REA 0.37	MARB 0.02	BMI\$ 337	BI\$ 405	CH\$ 96	

Rose is another product of four generations on our farm. Her family is known for good udders, eyes, and feet. Rose is also sired by our moderate framed, heavily muscled Leader 6964 son. We expect Rose to have a bit more frame size than her half sister. Neither heifer would be leaving the farm if I had enough pasture space. Al'd on January 14, 2024 to NJW 160B 028X Historic 81E ET. Pasture exposed to our Colorado 15G son from Aufdenburg Polled Herefords and our Revolution bred black Hereford from Crescent Herefords from 2/4/24 to 3/9/24. Date and calf color will determine sire.



Lot 47

48 RC 106G PAISLEY 1BCA {HYP,DBP}

Cow | P44362425 | 03/15/2022 | RC

Consigned by: *RISING CREEK HEREFORDS*

R LEADER 6964
BB 6964 LEADER 106G
 BB 0150 PERFECT CHARM 1461

WLB WINCHESTER POWERBALL 27A
RC 27A INDYS MISS JACKPOT 1BC
 BRF HOMETOWN INDEPENDENCE 1B ET

HYALITE ON TARGET 936
 R MISS REVOLUTION 1009
 H H PERFECT TIMING 0150 ET
 BB P606 BUTTERFLY 1102

WLB LEGO 83T 90X
 WLB 503W ALICE ET 8401Y
 NJW 73SW18 HOMETOWN 10Y ET
 BRF MISS MACY 1N

CED -0.1	BW 4.1	WW 63	YW 102	DMI 0.4	SC 1.3	SCF 15.8
MM 27	MCE -0.3	MG 58	MCW 100	UDDR 1.2	TEAT 1.2	CW 73
FAT 0.022	REA 0.48	MARB 0.05	BMI\$ 343	BI\$ 418	CH\$ 112	

Paisley is out of a very powerful powerball daughter. She comes from a maternal line of solid females that stay fat no matter what you feed them. Only selling because we have already retained a full sister. Pasture exposed to our Colorado 15G son from Aufdenburg Polled Herefords from 6/5/23 to 8/5/23.



Lot 48



gahr



TRUCK & EQUIPMENT INC.
SAINT JAMES, MO



*"We've got it, so you
can get it **DONE**"*

14380 State Route B, St James, MO 65559

www.gahrtruck.com • 573-265-5110

49 RC 20D IRIS 34BE

Cow | P44198382 | 03/28/2020 | RC

Consigned by: *RISING CREEK HEREFORDS*

NJW 98S R117 RIBEYE 88X ET
LAKE BARBARA POLO 20D ET
 RST MS 1000 BLAZER 2029

SHF RIB EYE M326 R117
 NJW 9126J DEW DOMINO 98S
 MJB BLAZER 1000
 MS RST 858 VICTOR 9059

3D ROBIN HOOD 210T
CR 210T IVY 34B
 4 STAR SASSAFRASS 34W

ALLENDALE ROBIN HOOD
 3D KRISTI P606 210S
 LJR 634L TACKETT 93T
 DFF MS MADAM VICTRA BOOMR

CED -2.3 **BW** 3.7 **WW** 53 **YW** 86 **DMI** -0.1 **SC** 0.9 **SCF** 15.8

MM 25 **MCE** 0.6 **MG** 51 **MCW** 77 **UDDR** 1.3 **TEAT** 1.3 **CW** 59

FAT 0.002 **REA** 0.31 **MARB** 0.08 **BMI**\$ 336 **BI**\$ 403 **CH**\$ 106

Iris is a dark red young cow with two dark eyes to match. She is sired by our Ribeye 88X son who was out of Blazer 2029. There are lots of SOD and DOD marks on her pedigree. This one probably shouldn't be leaving the farm. Pasture exposed to our Revolution bred black Hereford bull from 6/5/23 to 8/5/23. Will not be exposed back by sale day. Sells open.
Lot 49A: Registerable black Hereford heifer calf born 2/28/24.



Lot 49

50 SF 6113D WHITNEY 237

Cow | P44375243 | 02/15/2022 | RLS237

Consigned by: *STEINBECK FARMS*

FTF PROSPECTOR 145Y
FTF CONFIDENCE 6113D
 FTF VERONICA 4107B

HUTH PROSPECTOR K085
 FTF CHICK A BOOM 7227T
 TH 122 711 VICTOR 719T
 FTF MS REVOLUTION 2424Z

LJR 023R WHITMORE 10W
LJR MSU WHITNEY 110A
 LJR MSU MORGANN 258Y

KJ C&L J119 LOGIC 023R ET
 LJR MICKEY 278N
 GLENGROVE LJR MONTY M7
 LJR MARIA 69S

CED 3.5 **BW** 0.5 **WW** 62 **YW** 97 **DMI** 0.4 **SC** 0.9 **SCF** 19.6

MM 28 **MCE** 4.2 **MG** 59 **MCW** 102 **UDDR** 1.3 **TEAT** 1.3 **CW** 65

FAT 0.042 **REA** 0.21 **MARB** 0.17 **BMI**\$ 392 **BI**\$ 478 **CH**\$ 110

Two-year-old daughter out of our Confidence bull. Her dam who is a Dam of Distinction is one of our best cows on the farm. **Lot 50A:** Red baldy bull calf born 2/14/24.

CATALOG MATERIAL

All announcements at the sale by the owners or the auctioneer concerning the cattle will take precedence over statements in the sale catalog.

Larry Day, as sale manager, acts only as an agent for the sellers and has no responsibilities other than those involved in conducting the sale.

51 SF 174E SILVIA 025 ET

Cow | P44173184 | 02/11/2020 | RLS025

Consigned by: *STEINBECK FARMS*

TH 403A 475Z PIONEER 358C ET
TH FRONTIER 174E
 FTF TRUSTING LADY 312A

TH 89T 755T STOCKMAN 475Z
 TH 71U 17Y RITA 403A
 NJW 73S M326 TRUST 100W ET
 FTF BOOM AND BLOOM 8211U

LJR P606 SMITH 114S
LJR SILVIA 55W
 LJR RACHEL 99D

PW VICTOR BOOMER P606
 LJR PAULA 285K
 LJR RIVAL 75Y
 LJR MISS BEA 238A

CED 3.6 **BW** 1.8 **WW** 54 **YW** 90 **DMI** -0.1 **SC** 1 **SCF** 24.6

MM 31 **MCE** 0.6 **MG** 58 **MCW** 105 **UDDR** 1.3 **TEAT** 1.3 **CW** 64

FAT 0.042 **REA** 0.44 **MARB** -.06 **BMI**\$ 470 **BI**\$ 536 **CH**\$ 101

Easy fleshing Frontier daughter out of a Dam of Distinction with a great udder. One of the best we've ever offered at the Central Mo Polled Hereford Sale. **Lot 51A:** Bull calf born 12/16/23 sired by SF 173D Commitment 052 ET.



Lot 51

52 SF 173D FABULOUS 010

Cow | P44173173 | 01/17/2020 | RLS010

Consigned by: *STEINBECK FARMS*

KCF BENNETT ENCORE Z311 ET
NJW 79Z Z311 ENDURE 173D ET
 BW 91H 100W RITA 79Z ET

SCHU-LAR ON TARGET 22S
 KCF MISS REVOLUTION X338 ET
 NJW 73S M326 TRUST 100W ET
 REMITALL RITA 91H

FTF M326 FABRICATOR 838U
FTF FABULOUS 181Y
 FTF CLASSY LADY 856U

KCF BENNETT 3008 M326
 FTF BEAUTY 611F
 DR WORLD CLASS 517 10H
 FTF VELVET 425P

CED 1.9 **BW** 3.5 **WW** 66 **YW** 108 **DMI** 0.3 **SC** 1.5 **SCF** 21.3

MM 34 **MCE** 4 **MG** 67 **MCW** 105 **UDDR** 1.4 **TEAT** 1.4 **CW** 96

FAT 0.032 **REA** 0.91 **MARB** 0.16 **BMI**\$ 469 **BI**\$ 556 **CH**\$ 160

A hardworking Endure daughter out of a Dam of Distinction. Beautiful udder and extra pigment. **Lot 52A:** Bull calf born 12/12/23 sired by CMF 333G Hitching Post 648H.



Lot 52

53 CORKS AMK MRT 2311 {DLF,HYF,IEF,MSUDF}

Bull | P44476776 | 04/14/2023 | 2311



Consigned by: *STORIE FARMS*

CHURCHILL SENSATION 028X
CORKS AMK MR. T 1481 1711
AMK LADY VICTORIA 1241 1481

UPS DOMINO 3027
CHURCHILL LADY 7202T ET
MSU TCF REVOLUTION 4R
AMK LADY VICTORIA 1241

CHURCHILL ROCK 646D ET
CORKS AMK MAKENNA 2017 ET
H MAKENNA 7074

NJW 98S R117 RIBEYE 88X ET
SR CCC LADYSPORT 2205 Z ET
SHF ACCESS Y90 A216
H MAKENNA 5069

CE 7.1	BW 1.5	WW 55	YW 81	DMI 0.2	SC 0.9	SCF 27.2
MM 33	MCE 6	MG 60	MCW 77	UDDR 1.4	TEAT 1.6	CW 52
FAT 0.042	REA 0.32	MARB 0.04	BMI 484	BII 559	CHB \$ 80	

This young bull is a nice patterned dark red bull with a few freckles on his face. His actual BW was 65lbs with an actual WW of 622. As of February 16, he weighed 932 lbs., making him a good heifer bull candidate that will add performance. His granddam is a powerful doner cow that has produced several maternal made females and stout herdsires. Also, his dam in 2021 placed 2nd class at the JNHE and won numerous classes at Missouri shows. He ranks in the top 1% for SCF and TEAT, Top 3% for BMI, Top 5% for BII, Top 7% UDDR, Top 10% for MCE, Top 19% for CE and MM, Top 23% for BW, and Top 32% DMI. He'll make you some great, long-lasting cows!!



Lot 53

54 MR CONNIE 253K {HYP}

Cow | P44327743 | 01/20/2022 | 253

Consigned by: *STORIE FARMS*

FTF PROSPECTOR 145Y
FTF CONFIDENCE 6113D
FTF VERONICA 4107B

HUTH PROSPECTOR K085
FTF CHICK A BOOM 7227T
TH 122 711 VICTOR 719T
FTF MS REVOLUTION 2424Z

FTF PROSPECTOR 145Y
MR MS PROSPECTOR 709E
LPH SCARLET 6C

HUTH PROSPECTOR K085
FTF CHICK A BOOM 7227T
CHURCHILL SENSATION 028X
LPH U16 BONNIE 46A

CE 10.5	BW -0.3	WW 57	YW 94	DMI 0.4	SC 1	SCF 19.2
MM 29	MCE 7.2	MG 58	MCW 91	UDDR 1.3	TEAT 1.4	CW 69
FAT 0.052	REA 0.25	MARB 0.24	BMI 393	BII 479	CHB \$ 123	

This heifer is an amazing polled female that was on a cow that I bought from Falling Timber Farms. She is goggle-eyed, dark red, with an actual birth weight of 60 lbs, actual weaning weight of 572 lbs, a yearling weight of 1020 lbs. She ranks in the top 5% for MCE, 6% for CE & BW, 20% for MARB, 25% UDDR, 28% TEAT, 30% for MILK & BII, 35% for CHB, BMI, M&G, SCF, and YW. A powerhouse of a heifer that would be a great addition to anyone's herd. She is bred to my homozygous polled FTF FRONTIER 006H (44123207), an amazing bull that adds length, depth and muscle to his calves. So far, all the calves I've weaned out of him have had an average daily gain of 3 lbs or more. So her calf bull or heifer should make a great cow or herd bull for someone.



Lot 54

55 RP BECKY S DOMINETTE 371J {HYP}

Cow | P44356368 | 09/07/2021 | 371J

Consigned by: *STORIE FARMS*

CL 1 DOMINO 860U
JR L1 DOMINO 6809D
JR L1 DOMINETTE 2227Z

CL 1 DOMINO 637S 1ET
CL 1 DOMINETTE 5142R
JA L1 DOMINO 8513U
JA L1 DOMINETTE 8006U

B&B L1 DOMINO 1165
RP BECKYS ADVANCE 56C
RP BECKYS BROCK 41Z

CL 1 DOMINO 9125W 1ET
B&B L1 DOMINETTE 7235
RED HILLS BROCK M33 W200 ET
RED HILLS BECKY R125 W41

CE 2.8	BW 2.9	WW 54	YW 93	DMI 0.2	SC 0.9	SCF 8.5
MM 23	MCE 4.1	MG 50	MCW 97	UDDR 1	TEAT 1.1	CW 66
FAT 0.032	REA 0.27	MARB 0.01	BMI 224	BII 284	CHB \$ 102	

This 3-n-1 package is a great opportunity for someone wanting to get started. She is bred back to my homozygous polled FTF FRONTIER 006H (44123207), a super bull that puts some length and depth on his calves. This female ranks in the top 26% for MCE and 32% for DMI. She's a more moderate framed heifer that should fill out to be a good cow. **LOT 55A:** Bull calf, sired by B&B L1 DOMINO 163 (44320225), born 11-1-23, actual bw of 76 lbs.



Lot 55

56 JAK L1 DOMINETTE E106 (HYP)

Cow | 43798405 | 03/09/2017 | E106

Consigned by: *STORIE FARMS*

HH ADVANCE 2181Z
JAK L1 DOMINO B190
 JAK L1 DOMINETTE Y413

CL 1 DOMINO 886U
 HH MISS ADVANCE 6054S
 GB L1 DOMINO 471H
 JAK L1 DOMINETTE R101

JA L1 DOMINO 9213
JAK L1 DOMINETTE A340
 JAK L1 DOMINETTE Y254

CL 1 DOMINO 484
 JA L1 DOMINETTE 6554
 JA L1 DOMINO 8801U
 JAK L1 DOMINETTE U113

CED 2.2	BW 3.8	WW 52	YW 87	DMI 0.2	SC 0.8	SCF 10.6
MM 20	MCE 1.6	MG 46	MCW 75	UDDR 1	TEAT 1.1	CW 64
FAT 0.022	REA 0.12	MARB -.06	BMI\$ 242	BI\$ 297	CHBS 91	

Here's a straight line one horned female through and through as I've retained so many heifers this year, I felt that she would make a great addition to this sale and give someone an opportunity to get started. She may be a bit older, but she's a great producer. She's produced several great bull calves that weaned off in the upper 700 lbs. She ranks in the top 13% for mature carcass weight and top 32% for DMI. She sells bred to JAK L1 DOMINO J56, my newest Horned herdsire, and he was my pick of Oleen Brothers yearling hereford bulls and the only yearling Hereford bull to ever sell from there because they don't sell yearlings. The calves I've got out of him so far have been stout muscled, good looking calves.



Lot 56

57 VOWA 924 CAT LADY 341 (DBP)

Cow | P44494383 | 04/22/2023 | 341

Consigned by: *VOWA*

UPS SENSATION 2296 ET
VOWA 2296 MAGNUM 924
 CPH B239 MAGGIE 04D

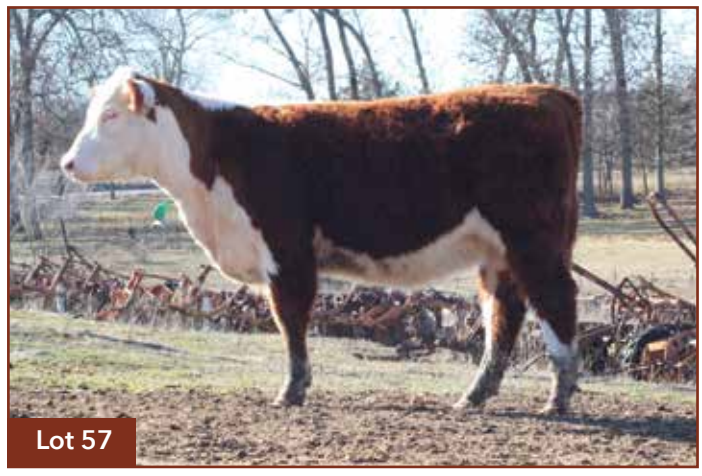
CHURCHILL SENSATION 028X
 UPS JT MISS NEON 7811 1ET
 GKB 88X LARAMIE B293
 RHF 0838 MADE RITE 1003Y

H H FAST FORWARD 2268Z ET
EXR CAT LADY 8002
 6 MILE CAT LADY 524

KJ HVH 33N REDEEM 485T ET
 HH MISS ADVANCE 6041S ET
 CRR 719 CATAPULT 109
 ILR IRON LADY 3106A ET

CED 3.7	BW 2.5	WW 55	YW 89	DMI 0.2	SC 1.2	SCF 16.8
MM 30	MCE 1.6	MG 58	MCW 90	UDDR 1.2	TEAT 1.2	CW 68
FAT 0.042	REA 0.47	MARB 0	BMI\$ 350	BI\$ 415	CHBS 101	

If you are still looking for a show heifer for the summer, take a look at the fancy April heifer. We debated long and hard on whether to show or sell her. She also has all the makings of a great cow.



Lot 57

58 VOWA 091 LASS 2112 (DBP)

Cow | P44406753 | 11/21/2022 | 2112

Consigned by: *VOWA*

CHURCHILL JUMPSTART 828F ET
VOWA 828 JUMPSTART 091
 APH 122L LASS F139ET

CHURCHILL KICKSTART 501C ET
 SR CCC LADYSPORT 2205 Z ET
 REMITALL ONLINE 122L
 KCF MISS REVOLUTION X338 ET

REMITALL ONLINE 122L
APH 122L LASS F139ET
 KCF MISS REVOLUTION X338 ET

REMITALL EMBRACER 8E
 REMITALL CATALINA 24H
 MSU TCF REVOLUTION 4R
 JW 718 VICTORIA 9106

CED 3.3	BW 2.2	WW 66	YW 117	DMI 0.6	SC 1.1	SCF 10.9
MM 25	MCE 6.6	MG 58	MCW 111	UDDR 1.2	TEAT 1.2	CW 82
FAT 0.012	REA 0.71	MARB 0.16	BMI\$ 293	BI\$ 374	CHBS 141	

Moderate-framed heifer that will be a great cow. Has excellent growth numbers. Al'd on 11/21/23 to KCF Bennett 9126J R294. Pasture exposed 1/1/24 to VOWA G16 CREATOR 111 (Genesis Son).

59 VOWA 091 KAMMIE 2111 (DBP)

Cow | P44406751 | 11/15/2022 | 2111

Consigned by: *VOWA*

CHURCHILL JUMPSTART 828F ET
VOWA 828 JUMPSTART 091
 APH 122L LASS F139ET

CHURCHILL KICKSTART 501C ET
 SR CCC LADYSPORT 2205 Z ET
 REMITALL ONLINE 122L
 KCF MISS REVOLUTION X338 ET

EXR BANKROLL 8130 ET
VOWA 8130 KAMMIE 032
 EXR KAMELIA 8067

BR BELLE AIR 6011
 EXR LEXUS 4208 ET
 EXR UPRISING 487 ET
 EXR 3208 69A KAMELIA 5054

CED 3.9	BW 1.7	WW 64	YW 112	DMI 0.8	SC 1.3	SCF 15.7
MM 27	MCE 3.4	MG 59	MCW 106	UDDR 1.3	TEAT 1.3	CW 79
FAT 0.032	REA 0.72	MARB 0.06	BMI\$ 345	BI\$ 420	CHBS 118	

Moderate-framed heifer that will be a great cow. Has excellent growth numbers. Al'd on 12/29/23 to KCF Bennett 9126J R294. Pasture exposed 1/20/24 to VOWA G16 CREATOR 111 (Genesis Son).

60 VOWA 924 LILIANA 296 (DBP)

Cow | 44406750 | 09/22/2022 | 296

Consigned by: *VOWA*

UPS SENSATION 2296 ET
VOWA 2296 MAGNUM 924
 CPH B239 MAGGIE 04D

CHURCHILL SENSATION 028X
 UPS JT MISS NEON 7811 1ET
 GKB 88X LARAMIE B293
 RHF 0838 MADE RITE 1003Y

BR NITRO AVENTUS 3116 ET
BR LILIANA E017 ET
 BR DM LILLIAN 8032 ET

UPS TCC NITRO 1ET
 BR ABIGAIL 8130 ET
 DM BR SOONER
 DM L1 DOMINETTE 340

CED 1.5	BW 4.1	WW 61	YW 100	DMI 0.2	SC 0.9	SCF 15.4
MM 29	MCE 2.3	MG 60	MCW 108	UDDR 1.3	TEAT 1.3	CW 69
FAT 0.032	REA 0.47	MARB 0	BMI\$ 337	BI\$ 407	CHBS 106	

Powerful built heifer with alot of maternal qualities in this pedigree. Our Magnum bull has continually produced outstanding cows. Al'd on 11/22/23 to Mohican Bar Star Revwed Up 78A. Pasture exposed 1/1/24 to 3/1/24 to VOWA G16 CREATOR 111 (Genesis Son).



Lot 60



Lot 61

61 VOWA 924 WILD LADY 252 (DBP)

Cow | P44375223 | 05/26/2022 | 252

Consigned by: VOWA

UPS SENSATION 2296 ET
VOWA 2296 MAGNUM 924
 CPH B239 MAGGIE 04D

CHURCHILL SENSATION 028X
 UPS JT MISS NEON 7811 1ET
 GKB 88X LARAMIE B293
 RHF 0838 MADE RITE 1003Y

LCX PERFECTO 11B ET
EXR WILD LADY 9013
 6MC WILD LADY 702 ET

NJW 98S R117 RIBEYE 88X ET
 WILL ZOEY 3Z
 C ETF WILDCAT 4248 ET
 ILR 4R IRON LADY 054Z ET

CE 3.9 **BW** 1.5 **WW** 56 **YW** 84 **DMI** 0.2 **SC** 1 **SCF** 23

MM 33 **MCE** 4.3 **MG** 61 **MCW** 86 **UDDR** 1.2 **TEAT** 1.3 **CW** 66

FAT 0.012 **REA** 0.62 **MARB** 0.07 **BMI\$** 449 **BI\$** 522 **CHB\$** 107

This moderate-framed heifer carries a solid set of numbers with a pedigree that will make a great cow. Al'd on 12/29/24 to KCF Bennett 9126J R294. Pasture exposed 1/20/24 to 3/1/24 to VOWA G16 CREATOR 111 (Genesis Son).



Lot 62

62 WIRTHMOR 504C LEEANN 218L (DBP)

Cow | P44460557 | 03/18/2023 | 218L

Consigned by: WIRTHMOR POLLED HEREFORDS

NJW 73S M326 TRUST 100W ET
BEHM 100W CUDA 504C
 BEHM R294 JASMAN 102Y

KCF BENNETT 3008 M326
 NJW P606 72N DAYDREAM 73S
 KCF BENNETT 9126J R294
 CPH MS WRANGLER 1W

WIRTHMOR 167Y SUREFIRE F902 ET
WIRTHMOR F902 JILL 328J
 WIRTHMOR C555 MS RUBY 910F

NJW 33TB 100W TRUST 167Y
 JDB 45P 507P LADYTANK C116 ET
 JDB 100W 507P TRUST C555 ET
 WPH 023R DJ RUBY RAY 610B

CE 9.4 **BW** 0.3 **WW** 64 **YW** 100 **DMI** 0.5 **SC** 1.1 **SCF** 11.5

MM 31 **MCE** 2.3 **MG** 63 **MCW** 76 **UDDR** 1.2 **TEAT** 1.2 **CW** 78

FAT 0.002 **REA** 0.57 **MARB** 0.39 **BMI\$** 305 **BI\$** 399 **CHB\$** 154

218L is another top Cuda heifer out of a 1st calf heifer with excellent EPD's. Leeann's dam (P44237220) Jill, has bred twice AI and calved again on 2/16/24.



Lot 63

63 WIRTHMOR 504C LIBERTY 207L (DBP)

Cow | P44441381 | 02/24/2023 | 207L

Consigned by: WIRTHMOR POLLED HEREFORDS

NJW 73S M326 TRUST 100W ET
BEHM 100W CUDA 504C
 BEHM R294 JASMAN 102Y

KCF BENNETT 3008 M326
 NJW P606 72N DAYDREAM 73S
 KCF BENNETT 9126J R294
 CPH MS WRANGLER 1W

CHURCHILL RED BULL 200Z
RHF 200Z RED LADY 6134D ET
 WALKER MISS R117 545 064 ET

CHURCHILL SENSATION 028X
 CHURCHILL LADY 002X ET
 SHF RIB EYE M326 R117
 WALKER MISS P606 06N 545

CE 10.4 **BW** 0.4 **WW** 60 **YW** 99 **DMI** 0.2 **SC** 1.2 **SCF** 16.7

MM 37 **MCE** 5.7 **MG** 67 **MCW** 74 **UDDR** 1.3 **TEAT** 1.3 **CW** 71

FAT 0.002 **REA** 0.57 **MARB** 0.36 **BMI\$** 382 **BI\$** 474 **CHB\$** 151

Liberty is another fine Cuda heifer with breed leading EPDs. 207L is top 2% for M&G, MM, & MARB. Top 6% for CE, BW, BMI\$, BI\$, & CHB\$. Top 10% for DMI. TOP 15% for MCW & REA. Top 20% for YW & SC. Top 25% for WW, UDDR, TEAT, CW, & FAT.

Index of Consignors:

Bade Polled Herefords.....Lots 2-8 Kent 314.607.6226	Hatchee Creek Farms.....Lots 26-27 Garry 573.859.6631	Steinbeck Farms.....Lots 55-52 Rick 573.680.0954
Beshler Farms.....Lots 9-13, 64 Charlie 573.225.3138	Kaczmarek Cattle Company.....Lots 28-29 Julie 573.202.4132	Storie Farms.....Lots 53-56, 66 Skyler 417.839.8401
Bourbeuse Bend Herefords.....Lots 14-15 Blake 573.368.9001	Lizzie's Polled Herefords.....Lots 30-35 Elizabeth 573.238.7409	VOWA.....Lots 57-61 Jeff 417.399.7450
Day Dream Cattle Company.....Lots 16-17 Travis 660.537.3546	McCorkill Family Farm.....Lots 36-37 Mike 417.838.2073	Wirthmor Polled Herefords.....Lots 62-63, 67 Dirk 417.252.3989
Grayson Cattle Company.....Lot 18 Jarrod 417.597.2524	Phillips-Renner Farms.....Lots 38-43 Amy 816.878.7305	
Gregory Polled Herefords.....Lot 19-25 Kevin 660.620.3585	Rising Creek Herefords.....Lots 44-49, 65 Stefanie 573.247.2726	



Lot 64



Lot 65

64
Commercial - BF105L

Consigned by: *BESHER FARMS*

105L is a commercial heifer that has a lot of potential.

65
Commercial - Adeline

Consigned by: *RISING CREEK HEREFORDS*

Adeline is a full blooded Hereford. Her sire was not DNA'd, and he unfortunately passed away. She is out of one of our strongest maternal lines. She will be a small to moderate-framed cow. Pasture exposed to our Revolution bred black Hereford bull from 6/5/23 to 8/5/23.

66
Commercial - 3-n-1 Polled Hereford

Consigned by: *STORIE FARMS*

This 4-17-21 born female is out of Peltzers Polled Hereford genetics on both sides. I bought her from a neighbor as a calf, and I like how she's turned out. I'm making room for more registered heifers so I felt that this would be the place for her. Her actual weaning weight was 672 pounds. **Lot 66A:** Bull calf, sired by FTF FRONTIER 006H (44123207). He had a bit of a rough start having a bit of the scours at the start in my fall calves but he's really porking it on now and could make somebody a good commercial bull. She sells bred back to the same bull FTF FRONTIER 006H (44123207). She should make somebody a good commercial cow that can produce a good calf.

67A
Commercial - L27 - Red Baldy

Consigned by: *WIRTHMOR POLLED HEREFORDS*

L27, born 4-4-23, 69 lb. BW, is out of J16,(44237219) 1st calf heifer. J16 is out of our Trust son and FTF Revolution 126Y dam.

67B
Commercial - L25 - Red Baldy

Consigned by: *WIRTHMOR POLLED HEREFORDS*

L25, born 3-28-2023, 67 lb bw, is out of J2,(P44232216) 1st calf heifer. J2 is out of Red Bull/Cashes Crown who sold at the 2023 Missouri Opportunity Sale.



Lot 67A



Lot 67B

Become a member today!

Central Missouri Polled
Hereford Breeders Association

Contact: Larry Day • Secretary/Treasurer

Download application online at:
www.centralmissouripolledherefords.com



**CENTRAL MISSOURI
POLLED HEREFORD
BREEDERS ASSOCIATION**

Larry Day, *Sale Manager*
12139 Highway 135
Pilot Grove, MO 65276



123rd *Annual Sale*

Central Missouri Polled Hereford Breeders Association

April 13, 2024 • NOON

LOCATION: Interstate Regional Stockyards • Cuba, MO